

Engine	WeiChai WP6G125E201
Gross Power	92 kW (124 hp) @ 2,000 rpm
Net Power	85 kW (114 hp) @ 2,000 rpm
Operating Weight	10,600 kg
Standard Bucket Size	1.8 m ³
Standard Breakout Force	100 kN
Standard Dump Clearance	3,200 mm

835H

WHEEL LOADER
LONG REACH ARM



TOUGH WORLD. TOUGH EQUIPMENT.

835H SPECIFICATIONS >>>

ENGINE

Emission Regulation	Tire 2 / Stage II
Make	WeiChai
Model	WP6G125E201
Gross Power	92 kW (124 hp) @ 2,000 rpm
Net Power	85 kW (114 hp) @ 2,000 rpm
Peak Torque	560 N.m
Displacement	6.75L
Number of Cylinder	6
Aspiration	Turbocharged

TRANSMISSION

Transmission Type	Planetary, power shift
Torque Converter	Double stage, four elements
Maximum Travel Speed, fwd	37 km/h
Maximum Travel Speed, rev	15.5 km/h
Number of Speed, fwd	2
Number of Speed, Rev	1

AXLES

Differential Front Type	Conventional
Differential Rear Type	Conventional
Axle Oscillation	$\pm 11^\circ$

STEERING

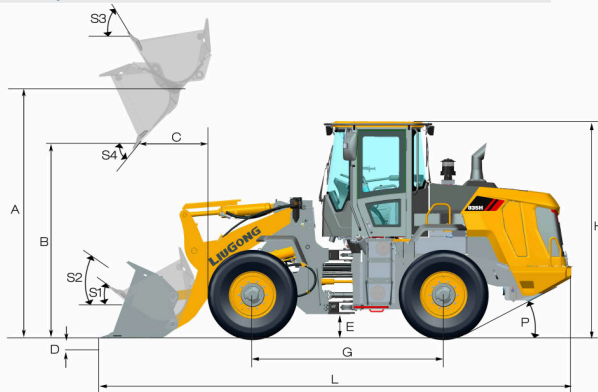
Steering Configuration	Articulated
Steering Relief Pressure	17.2 MPa

BRAKES

Service Brake Type	Caliper disc brake
Service Brake Actuation	Air over hydraulic
Parking Brake Type	Flexible shaft control
Parking Brake Actuation	Mechanical

HYDRAULIC SYSTEM

Main Pump Type	Gear
Main Relief Pressure	18 MPa
Raise	4.7 s
Dump Time	1.0 s
Float Down Time	3.1 s
Fastest Total Cycle Time	8.8 s



LOADER ARM PERFORMANCE with Standard Bucket 1.8 m³

Tipping Load - Straight according to ISO 14397-1:2007	7,200 kg
Tipping Load - Full Turn according to ISO 14397-1:2007	6,300 kg
Bucket Breakout Force	100 kN
A Maximum Hinge Pin Height	4,010 mm
B Dump Clearance at Full Height Discharge	3,200 mm
C Dump Reach at Full Height Discharge	1,004 mm
D Maximum Digging Depth, Bucket Level	40 mm
S ₁ Rollback at Ground Level	41°
S ₂ Bucket Rollback at Carry	48°
S ₃ Bucket Rollback at Maximum Height	61°
S ₄ Maximum Dump Angle at Full Height	45°

BUCKET PERFORMANCE

Reference Bucket	1.8 m³
------------------	--------

DIMENSIONS

E Ground Clearance	345 mm
G Wheelbase	2,870 mm
H Cab Height	3,232 mm
J Wheel Tread	1,850 mm
K Width Over Tires	2,300 mm
L Length with Bucket Down	7,260 mm
M Turn Angle, Either Side	40°
P Rear Angle of Departure	29°
R ₁ Turning Radius, Bucket Carry	5,850 mm
R ₂ Turning Radius, Outside of Tire	5,090 mm

TIRES

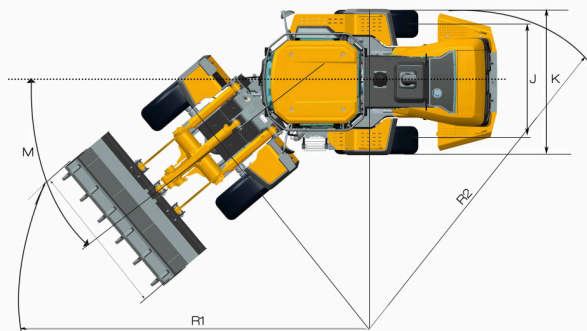
Tire Size	17.5 - 25
-----------	-----------

OPERATING WEIGHTS

Operating Weight	10,600 kg
------------------	-----------

SERVICE CAPACITY

Fuel Tank	140 L
Engine Oil	18 L
Cooling System	35 L
Hydraulic System	88 L
Transmission and Torque Converter	45 L
Axles, Each	16 L



Guangxi Liugong Machinery Co., Ltd.

No. 1 Liutai Road, Liuzhou, Guangxi 545007, PR China
T: +86 772 3886124 E: overseas@liugong.com
www.liugong.com

Specifications and designs are subject to change without notice. Machines shown may include optional equipment. Liugong standard and optional equipment may vary from region to region. Please consult your Liugong dealer for information specific to your area.

03/2018 Designed by Liugong