



Asphalt Distributors

Maximizer 3



Maximizer 3 Asphalt Distributor

Features include:

- 8- to 16-foot EZ-Spray Extendible Spraybar
- Automatic In-Cab Controls
- Straight-line Start and Stop
- Tapered and Radius Spraying
- Internal Spraybar Valves
- 400 GPM Viking Asphalt Pump
- Fully Circulating Spraybar
- Enviro-Flush Clean Out System
- 18- to 20-foot Spraybar Width Options

Designed with the Paving Professional in Mind.®

Maximizer 3 Specifications

CAPACITY

- 1,000 U.S. gallons (3,785 L) to 4,000 U.S. gallons (15,142 L) w/overage for expansion

TANK TYPE

- Elliptical shape
- Full cross section, 10-gauge (3.4 mm) surge plates with staggered openings
- Meets all applicable Federal tank regulations for asphalt distributors

TANK MATERIAL

- Steel, 10-gauge (3.4 mm) shell
- 7-gauge (4.5 mm) reinforced and flanged heads
- All seams electrically-welded, inside and out

INSULATION AND JACKET

- 2-in. (51 mm) thickness with .05 in. (1 mm) weatherproof aluminum jacket

MANHOLE

- 22-in. (559 mm) diameter with weather-tight and safety relieving cover
- Inside splash guards
- 3-in. (76 mm) diameter overflow
- Steel measuring stick
- Basket type strainer

SUMP

- 8-in. (203 mm) diameter at rear of tank with cleanout plug
- Suction line from pump includes tank cutoff valve

HEATING FLUES

- Hi-Lo double flue with 8-in. (203 mm) inside diameter tubing with square return bend configuration

EXHAUST STACK

- 14-gauge (1.9 mm) stainless steel at rear with hood

THERMOMETER

- 5-in. (127 mm) dial thermometer
- Armored pencil inspectors type, 20 to 500 degrees on side of tank in pipe well
- In cab digital reading

CONTENTS GAUGE

- Float type, continuous reading in 50-gallon (189 L) increments
- Front and rear tank head mounted

BURNERS

- Diesel-fired burner(s) with standard electronic ignition
- Optional liquid withdrawal LPG burner(s) with pressure regulators and necessary LP connections to frame mount 52-gallon tank, std.
- Optional LPG electronic control (ignition, outfire, temperature limit)

FLUSH TANK

- 25 gallons (95 L) with connections to asphalt pump for clean out of pump and piping
- Enviro-Flush clean out system for environmentally-friendly handling of cleaning solvent

AUTO FUNCTION FROM CAB DISTRIBUTOR CONTROLS

- Plus-1 control system for control of all distributor functions from the cab
- Display includes selectable readouts for pump GPM, truck FPM, application rate, spraybar length, distance traveled, gallons sprayed, digital in cab tank contents temperature, flow, speed calibration, spraybar width, hour meter and total area sprayed (including metric readings)
- 12 preset settings for application rate and flow calibration
- Plus-1 system controls auto valves for 8 modes of distributor operation: Off, Clean-out, Reverse Suction, Handspray/Unload, Transfer, Load, Tank Circulate, Spray. The panel includes spraybar control allowing the spraybar nozzles to be turned off, spray asphalt, or pressurize and heat the spraybar using bar circulate functions.
- Provides accurate application regardless of changes in speed or spraybar width during operation

ASPHALT PUMP

- Viking MV1054, 4-in. (102 mm) 400 GPM/1,514 LPM capacity positive displacement, rotary gear pump
- Located at rear of unit with suction piping to tank sump

CAB CONTROL

- Controls in cab for spraybar circulate On/Off 1 ft. (.3 m) increments on outer 4-ft. of both spraybars
- Bar turns On/Off in 4-in. (102 mm) increments as it is extended or retracted
- Auto valve functions

ASPHALT PUMP DRIVE

- Hydrostatic, variable displacement hydraulic pump, front live power driven (truck chassis must be suitable for front live power), with fixed displacement hydraulic motor
- Controls in the cab and at the rear fender provide manual control of the asphalt pump speed.
- 20-gallon (76 L) hydraulic reservoir
- Optional PTO from transmission to drive distributor hydraulics.

SPRAYBAR

- EZ-Spray spraybar, variable from 8- to 16-ft. (2.43 m - 4.87 m) in width
- Fully circulating spraybars via cab controls keep spraybar pressurized and heated. Activated nozzles turn on while extending and turn off while retracting the spraybar, eliminating overspray.
- Two-way safety breakaway at end of each bar
- 4-in. (102 mm) nozzle spacing and individual manual shutoff valves for each nozzle
- All spray valves are mounted internally to ensure continuous heating and minimized plugging.
- Cab control of spraying and circulation
- Extension and lift of spraybar controlled from cab and rear control box

NOZZLES

- Standard brass V-jet, 4-in. (102 mm) centers

GROUND SPEED

- GPS to accurately measure speed and distance traveled
- Optional radar horn

MISCELLANEOUS EQUIPMENT

- Transfer valve with quick coupler
- 4-way heated mirror
- Rear bumper
- Back-up alarm
- Single nozzle handspray wand with 25-ft. (7.6 m) hose

OPTIONAL EQUIPMENT

- Rubber or steel loading hose
- Washdown system
- 2- or 3-nozzle handspray wand
- 18- or 20-ft. EZ-Spray extendible spraybar system

FINISH

- Enamel black paint with aluminum



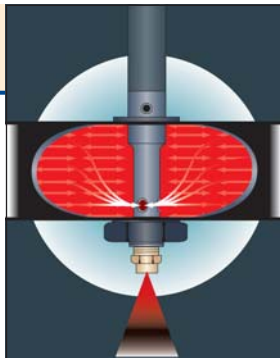
Maximizer 3 Features & Benefits



Rosco's Maximizer 3 asphalt distributor features an extendible spraybar that smoothly moves from an 8-foot to 16-foot width in 4-inch increments. The EZ-Spray extendible spraybar makes radius and taper spraying, along with maneuvering for obstacles such as bridges, a smooth and efficient operation.

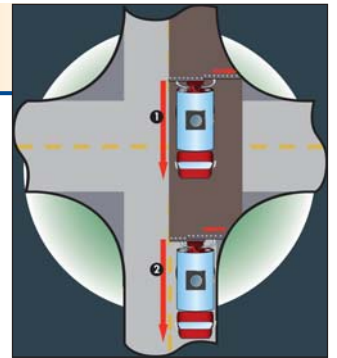
Self-Contained Valve Operation

Individually controlled valves incorporate air cylinder into the valve eliminating external exposure of linkages or cylinder rods.



Efficient Corners and Smooth Tapers

Extend bar into radius shots or taper for less unit maneuvering and a more efficient job.



Safety Breakaway

One-foot breakaway at the bar's end prevents damage if an impact with an obstacle occurs.



Avoid Obstacles On-The-Move

Retract bar for obstacles such as bridges without maneuvering unit.



EZ-Spray Extendible Spraybar

Spraybar extends continuously in 4-inch increments in either direction allowing operator to make the shot without overlapping or gapping.



Asphalt Distributors



Maximizer II



Maximizer II Asphalt Distributor

Features include:

- 12-foot Fully Circulating Spraybar
- Automatic In-Cab Controls
- Accurate Application from Start to Finish
- Internal Spraybar Valves
- 400 GPM Viking Asphalt Pump
- Enviro-Flush Clean Out System
- Spraybar Extension Options up to 24-foot

Designed with the Paving Professional in Mind.®

Maximizer II Specifications

CAPACITY

- 1,000 U.S. gallons (3,785 L) to 4,000 gallons (15,142 L) w/overage for expansion

TANK TYPE

- Elliptical shape
- Full cross section, 10-gauge (3.4 mm) surge plates with staggered openings
- Meets all applicable Federal tank regulations for asphalt distributors

TANK MATERIAL

- Steel, 10-gauge (3.4 mm) shell
- 7-gauge (4.5 mm) reinforced and flanged heads
- All seams electrically-welded, inside and out

INSULATION AND JACKET

- 2-in. (51 mm) thickness with .05 in. (1 mm) weatherproof aluminum jacket

MANHOLE

- 22-in. (559 mm) diameter with weather-tight and safety relieving cover
- Inside splash guards
- 3-in. (76 mm) diameter overflow
- Steel measuring stick
- Basket type strainer

SUMP

- 8-in. (203 mm) diameter at rear of tank with cleanout plug
- Suction line from pump includes tank cutoff valve

HEATING FLUES

- Hi-Lo double flue with 8-in. (203 mm) inside diameter tubing with square return bend configuration

EXHAUST STACK

- 14-gauge (1.9 mm) stainless steel at rear with hood

THERMOMETER

- 5-in. (127 mm) dial thermometer
- Armored pencil inspectors type, 20 to 500 degrees on side of tank in pipe well
- In cab digital reading

CONTENTS GAUGE

- Float type, continuous reading in 50-gallon (189 L) increments
- Front and rear tank head mounted

BURNERS

- Diesel-fired burner(s) with standard electronic ignition
- Optional liquid withdrawal LPG burner(s) with pressure regulators and necessary LP connections to frame mount 52-gallon tank, std.
- Optional LPG electronic control (ignition, outfire, temperature limit)

FLUSH TANK

- 25 gallons (95 L) with connections to asphalt pump for clean out of pump and piping
- Enviro-Flush clean out system for environmentally-friendly handling of cleaning solvent

AUTO FUNCTION FROM CAB DISTRIBUTOR CONTROLS

- Plus-1 control system for control of all distributor functions from the cab
- Display includes selectable readouts for pump GPM, truck FPM, application rate, spraybar length, distance traveled, gallons sprayed, digital in cab tank contents temperature, flow, speed calibration, spraybar width, hour meter and total area sprayed (including metric readings)
- 12 preset settings for application rate and flow calibration
- Panel includes control for spraybar circulate On/Off, spraybar lift and shift, and auto valve selection for load, transfer, tank circulate, spray, handspray and clean out functions
- Provides accurate application regardless of changes in speed or spraybar width during operation
- In-cab controls for spraybar wing-folds and control of spraybar in 1-ft. increments

ASPHALT PUMP

- Viking MV1054, 4-in. (102 mm) 400 GPM/1,514 LPM capacity positive displacement, rotary gear pump
- Located at rear of unit with suction piping to tank sump

CAB CONTROL

- On/Off controls in cab by spraybar sections
- Spraybar lift and shift
- Auto valve functions
- On/Off of spraybar in 1-ft. (.3 m) increments
- Controls in cab and at rear for hydraulic folding of spraybar wing sections

ASPHALT PUMP DRIVE

- Hydrostatic, variable displacement hydraulic pump, front live power driven (truck chassis must be suitable for front live power), with fixed displacement hydraulic motor
- Controls in the cab and at the rear fender provide manual control of the asphalt pump speed.
- 20-gallon (76 L) hydraulic reservoir
- Optional PTO from transmission to drive distributor hydraulics.

SPRAYBAR

- EZ-Spray, 12-ft (3.7 m) fully circulating spraybar
- Two 4-ft. (1.2 m) center sections and two 2-ft (.6 m) folding sections, 2 compartment sections
- 4-in. (102 mm) nozzle spacing with individual manual shutoff valves for each nozzle
- Power lift and shift of spraybar
- Exclusive two-way safety breakaway feature
- All spray valves are mounted internally to ensure continuous heating and minimized plugging.
- Cab control of spraying and circulation

NOZZLES

- Standard brass V-jet, 4-in. (102 mm) centers

GROUND SPEED

- GPS to accurately measure speed and distance traveled
- Optional radar horn

MISCELLANEOUS EQUIPMENT

- Transfer valve with quick coupler
- Back-up alarm
- Single nozzle handspray wand with 25-ft. (7.6 m) hose
- Rear bumper

OPTIONAL EQUIPMENT

- Rubber or steel loading hose
- Washdown system
- 4-way power mirror
- 2- or 3-nozzle handspray wand
- 1-ft. (.3 m) spraybar extensions
- 2-ft. (.6 m) spraybar extensions

FINISH

- Enamel black paint with aluminum

Maximizer II Best In Class

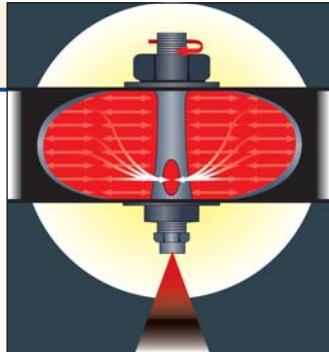
LeeBoy



Rosco's Maximizer II asphalt distributor puts the operator in full control from the clean, safe comfort of the cab. Maximizer II's Plus-1 controller controls application rate and spray width in 1-foot sections while on the move. The Viking asphalt pump and clog-free spraybar valves make Maximizer II a reliable workhorse on the job. Clean-up is a snap with the Enviro-Flush clean out system.

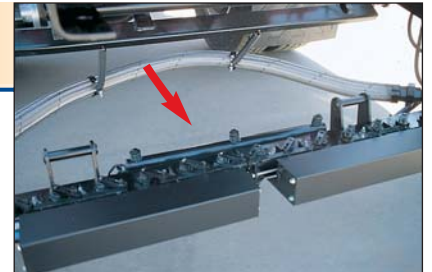
Clog-Free Valves

Internal spraybar valves are surrounded by hot asphalt during operation and solvent during clean out – eliminates clogging.



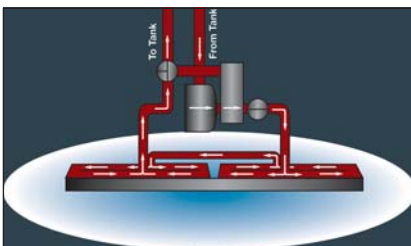
Center Breakaway

Prevents damage to spraybar from either direction – across entire width of spraybar.



Full Circulation Spraybar

Full circulation of material flow through entire system prevents build up from tank to spraybar ends. Clean out of pump, valves and spraybar is complete even with heavy grade materials.



One-Foot Control Spraybar

Open or close any one-foot section of the spraybar from the cab.



Spraybar Extensions

Extend width of spraybar by adding spraybar extensions. Hydraulically raise or lower extensions when needed.



Maximizer II & 3 Common Features



Viking Asphalt Pump

The Viking asphalt pump minimizes asphalt damage and provides greater reverse suction for full system clean out.



Clean Starts

Start, stop and restart material flow with a clean, clear line. (Maximizer 3's staggered bar is synchronized to start and stop cleanly.)



Plus-1 Controller

Plus-1 Controller controls spray, bar circulate and spray width while on the move. Monitor or change material application as needed. Complete, automatic switching without touching hot valves.



Automatic Valve Control

Automatically controlled by the Plus-1 Controller, valves make for clean and accurate asphalt movement and distribution.

How It Works

Enviro-Flush Cleaning System



1 Activate Enviro-Flush Cleanout Cycle. Automated valve opens and adds a small amount of solvent to the system.



2 Cleanout cycle opens re-circulate valve to flush solvent through the entire spray system and bar.



3 Reopen Enviro-Flush valve and reverse pump to return solvent to 25-gallon tank to be reused again and again.



4 Material is contained in the tank until it can be disposed of at an environmentally safe location.

Configurations

Configuration Checklist

Maximizer 3

| | |
|--|----------|
| 1,000- to 4,000-gallon Capacity Tank | ✓ |
| 400 GPM Viking Asphalt Pump | ✓ |
| 8- to 16-foot EZ-Spray Extendible Fully Circulating Spraybar | ✓ |
| Plus-1 In-Cab Controller | ✓ |
| 8-inch diameter Hi-Lo Double Heating Flue | ✓ |
| Diesel-fired Burner with Heat Limit Control | ✓ |
| 5-inch Dial Thermometer and Armored Pencil Thermometer | ✓ |
| 1-inch Sampling Valve | ✓ |
| Front and Rear Dial Contents Gauges | ✓ |
| Single Nozzle Handspray Wand | ✓ |
| Meets Federal DOT Hot Asphalt Regulations | ✓ |
| Enviro-Flush Clean Out System | ✓ |
| LPG Burner in lieu of Diesel Burner (52-gallon LP tank) | Optional |
| 18- or 20-foot EZ-Spray Extendible, Fully Circulating Spraybar | Optional |
| Wash Down System for Spraybar Cleaning | Optional |

Maximizer II

| | |
|--|----------|
| 1,000- to 4,000-gallon Capacity Tank | ✓ |
| 400 GPM Viking Asphalt Pump | ✓ |
| Manual Spraybar Lock Assembly | ✓ |
| 8-inch diameter Hi-Lo Double Heating Flue | ✓ |
| Diesel-fired Burner with Heat Limit Control | ✓ |
| Plus-1 In-Cab Controller with 12-foot Circulating Spraybar | ✓ |
| 5-inch Dial Thermometer and Armored Pencil Thermometer | ✓ |
| 1-inch Sampling Valve | ✓ |
| Front and Rear Dial Contents Gauges | ✓ |
| Single Nozzle Handspray Wand | ✓ |
| Meets Federal DOT Hot Asphalt Regulations | ✓ |
| In-Cab Control of Spraybar in 1-foot Increments | ✓ |
| Cab Control Folding Wings | ✓ |
| Enviro-Flush Clean Out System | ✓ |
| LPG Burner in lieu of Diesel Burner (52-gallon LP tank) | Optional |
| 1- or 2-foot Spraybar Extensions | Optional |
| Wash Down System for Spraybar Cleaning | Optional |

LeeBoy makes continuous improvements to all its products and reserves the right to change specifications without notice. Photos and illustrations may contain standard and optional equipment.

Max 3/II, 04-2013



Check us
out online

www.**LeeBoy**.com

Contact your
LeeBoy dealer:

