

LÍNEA EPSILON

GRÚAS CHATARRERAS

LIFETIME EXCELLENCE



DATOS TÉCNICOS

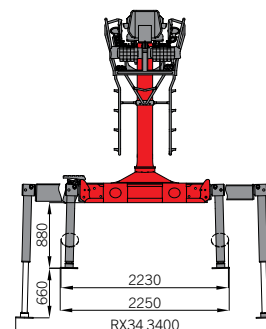
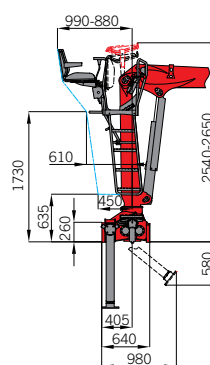
Technical drawing of the KUKA KR 1000 R1100 robot arm, showing dimensions in mm.

Main View Dimensions:

- Horizontal dimensions (from base to end effector): 100, 3750, 5885, 7735, 1850.
- Vertical dimensions (from base to end effector): 2370, 2150, 2055, 475, 2525.

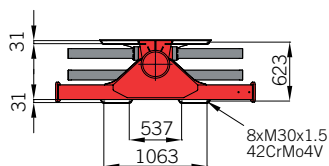
Detail View Dimensions (End Effector):

- Horizontal dimensions: 536, 1032.
- Vertical dimensions: 32, 591.
- Material specifications: 8xM24x1,5, 42CrMo4.

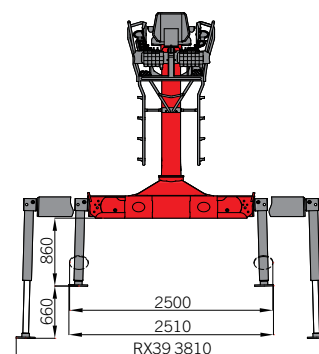


Technical drawing of the robot arm showing dimensions in mm:

- Total length: 7980
- Distance from base to the end of the first segment: 6400
- Distance from base to the end of the second segment: 3880
- Distance from the end of the second segment to the end of the third segment: 1580



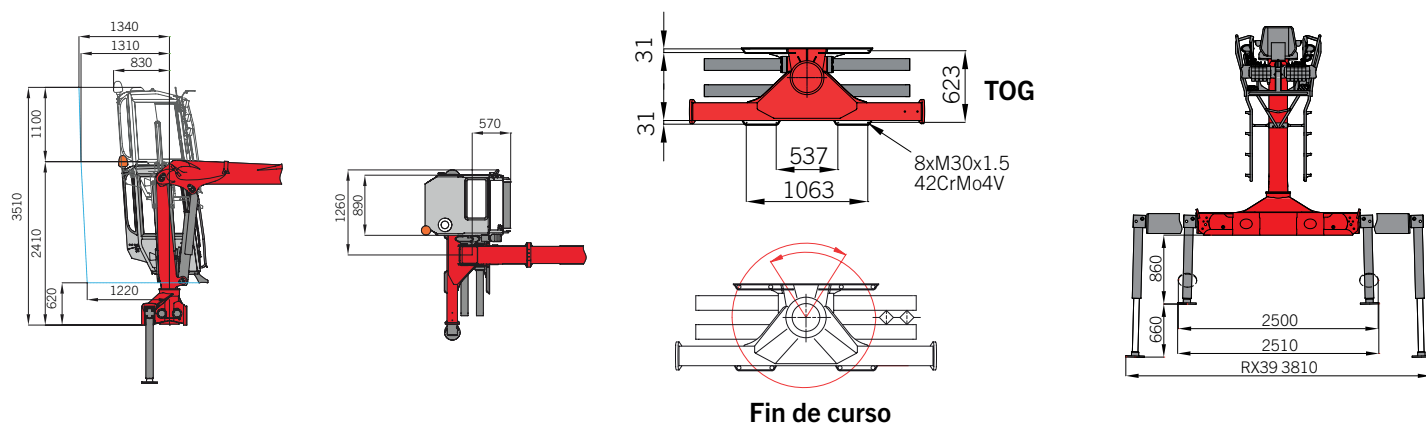
Fin de curso

**Capacidad de Carga***

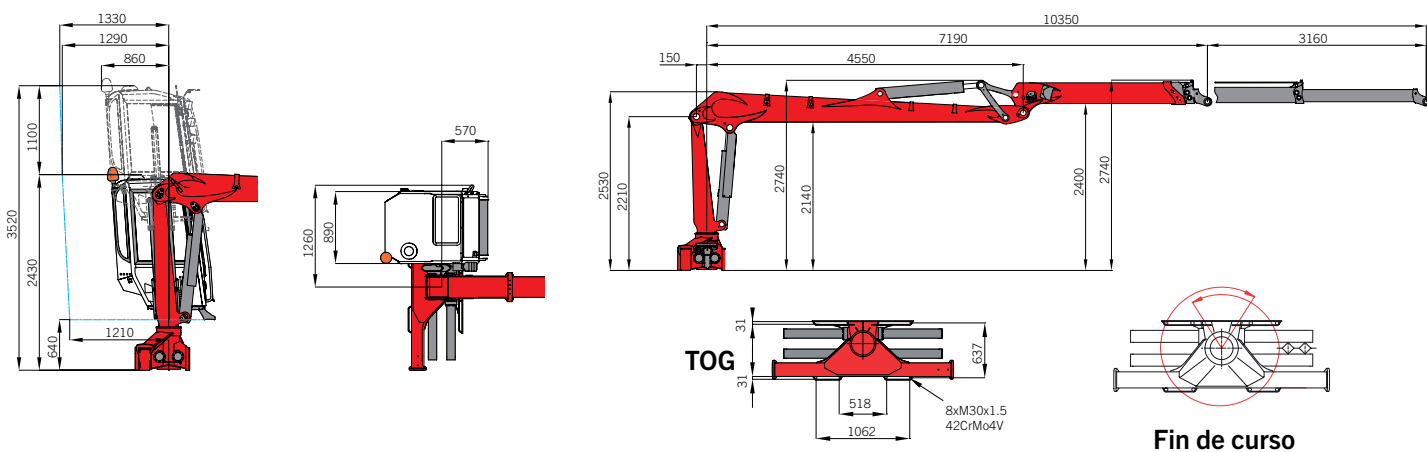
A diagram of a crane boom, represented as a horizontal beam. On the left end, there is a red weight labeled 2530 kg, with a distance of 3m indicated below it. Moving to the right, there is a red weight labeled 1890 kg with a distance of 4m indicated below it. Further right is a red weight labeled 1510 kg with a distance of 5m indicated below it. Next is a red weight labeled 1250 kg with a distance of 6m indicated below it. Finally, on the far right, there is a grey weight labeled 1060 kg with a distance of 7m indicated below it. The beam itself is red, and the weights are shown as rectangular blocks.

*sin garra y sin rotor

M100L80 CON CABINA



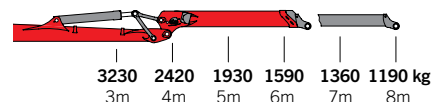
Q130LD104 CON CABINA | ESTACIONARIA



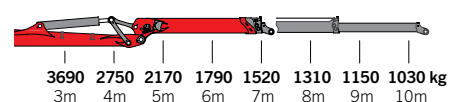
	M100L80 CAM	Q130LD104 CAM
Alcance máximo	8,0 m	10,4 m
Momento de carga útil	9,7 tm	11,1 tm
Torque de giro útil	2,4 tm	3,0 tm
Ángulo de giro	425°	425°
Presión de trabajo	215 bar	210 bar
Caudal recomendado	1 x 80 l / min	1 x 90 l / min
Rotor	BK 046 ou BK 138 (6t)	BK 046 ou BK 138 (6t)
Accionamiento	2 joystick y 2 pedales	2 joystick y 2 pedales
Asiento	Lateral	Lateral
Iluminación	5 faros	5 faros
Peso total (sin garra y sin rotor)	1990 kg	2760 kg

Capacidad de Carga*

M100L80 CAM

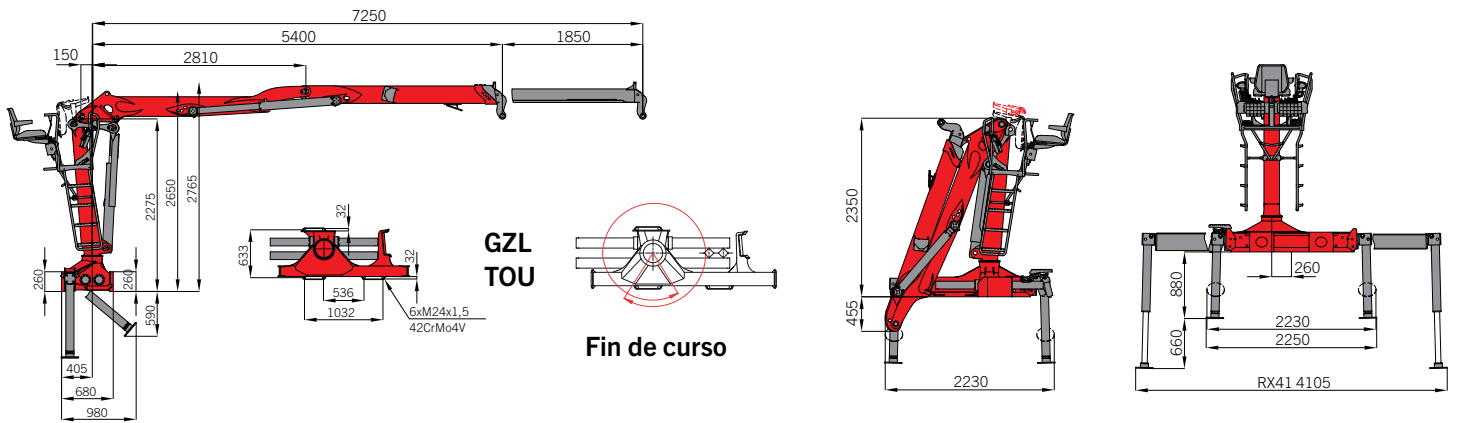


Q130LD104 CAM

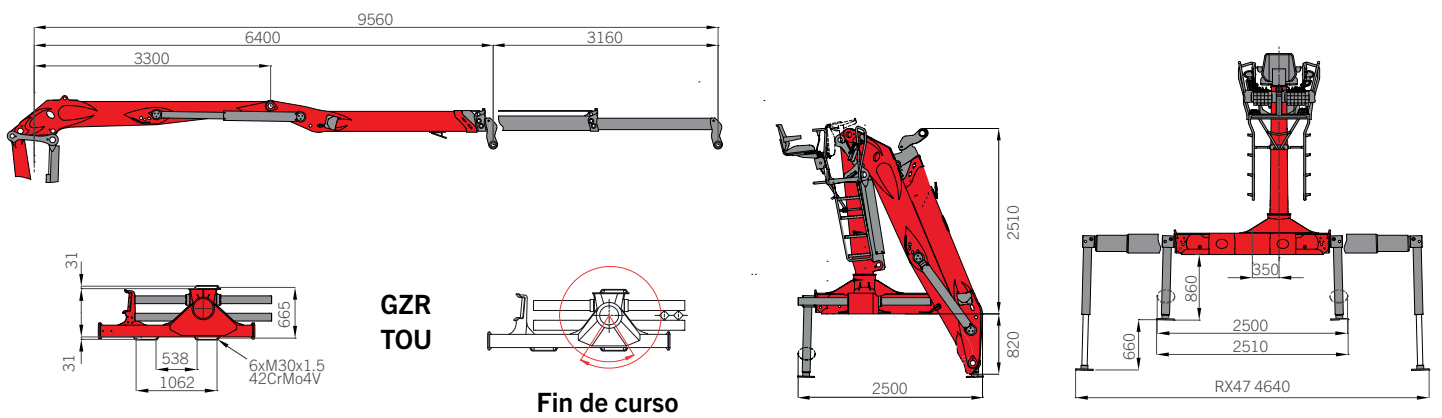


*sin garra y sin rotor

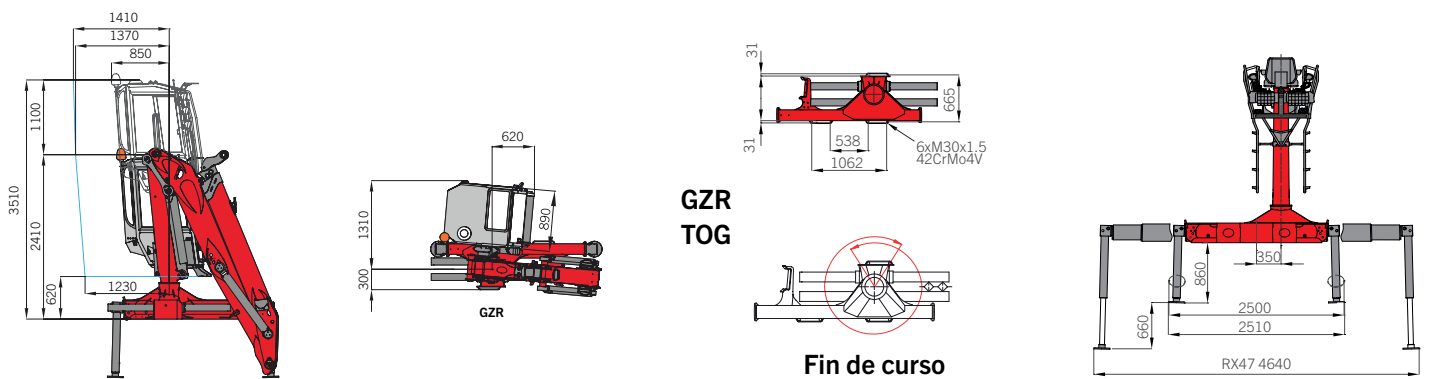
C80Z73



M120Z96



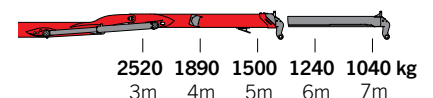
M120Z96 CON CABINA



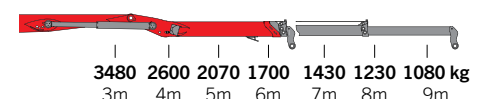
	C80Z73	M120Z96 / M120Z96 CAM
Alcance máximo	7,3 m	9,6 m
Momento de carga útil	7,6 tm	10,5 tm
Torque de giro útil	2,0 tm	2,8 tm
Ángulo de giro	420°	425°
Presión de trabajo	240 bar	260 bar
Caudal recomendado	1 x 70 l / min	1 x 80 l/min
Rotor	RB06F (6t)	BK 046 ou BK 138 (6t)
Accionamiento	2 joystick y 2 pedales	2 joystick y 2 pedales
Asiento	Central	Central / Lateral
Iluminación	4 faróis	4 faros / 5 faros
Peso total (sin garra y sin rotor)	1760 kg	2110 kg

Capacidad de Carga*

C80Z73



M120Z96



*sin garra y sin rotor



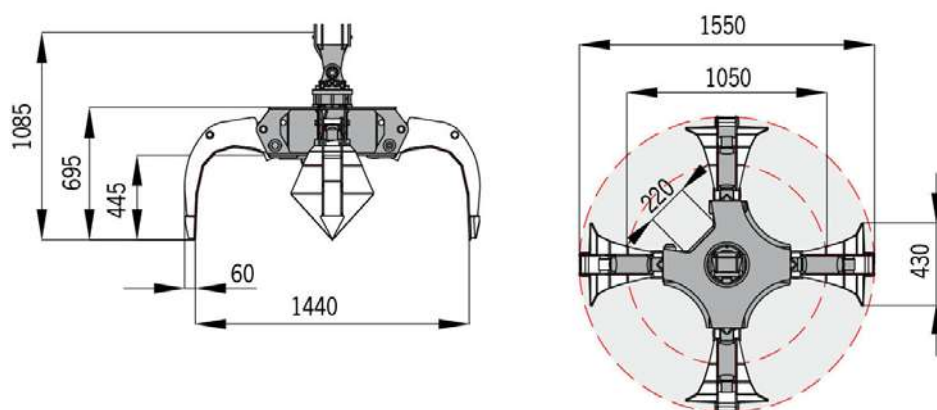
M100L80



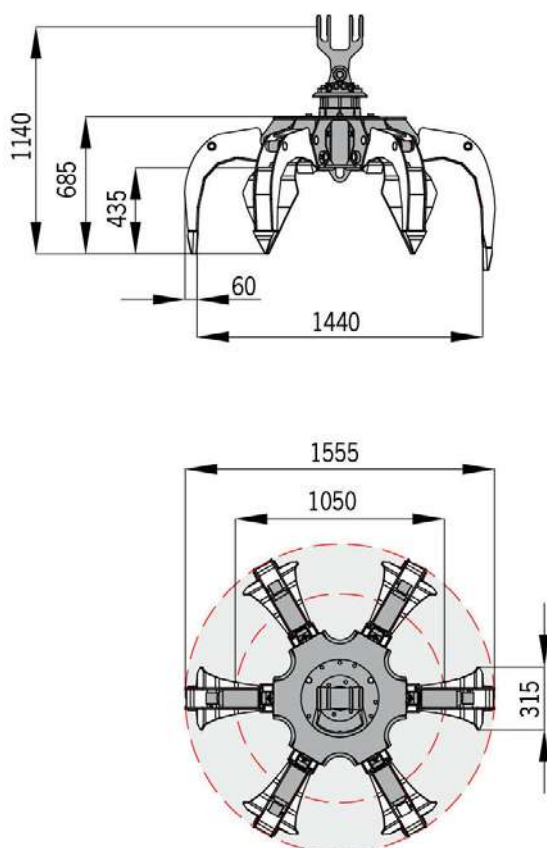
M100L80 con cabina

GARRAS CHATARRERAS

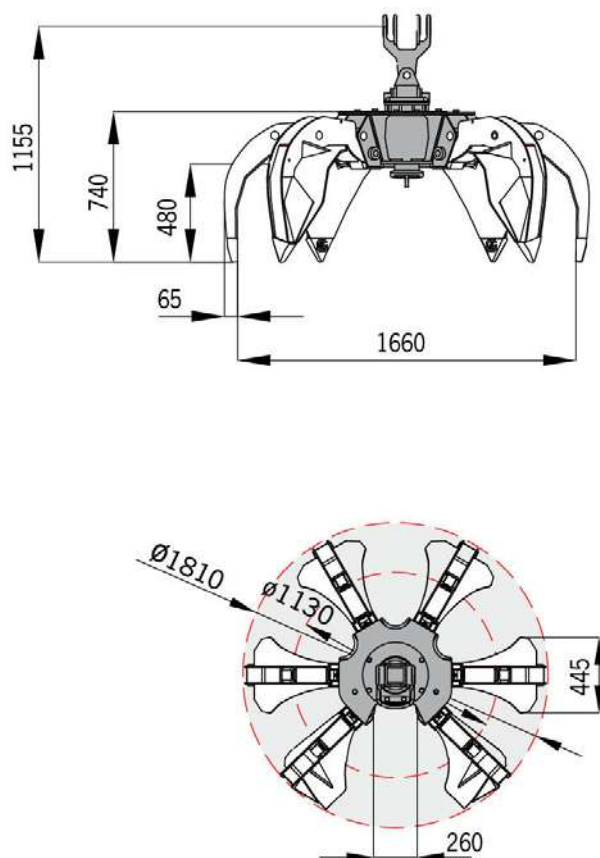
SG204



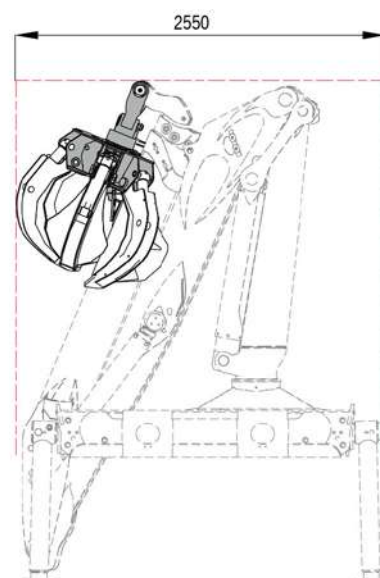
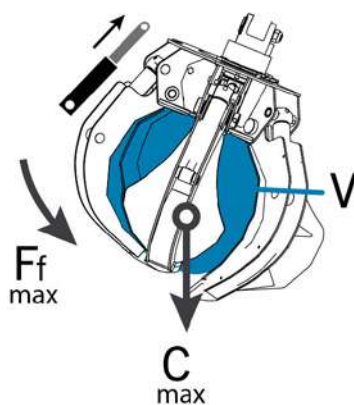
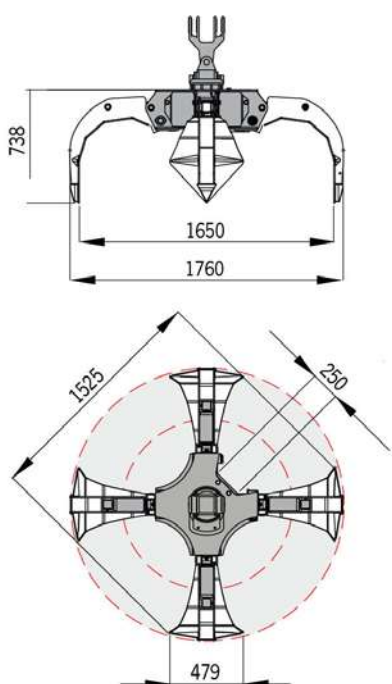
SG256





SG300



SG304



	SG204	SG256	SG300	SG304
Volume [l]	200	250	300	300
C max* [kg]	2000	2500	2500	2500
 [MPa]	32	30	30	32
Ff max** [kN]	10	11,5	17	15
 [kg]	270	377	424	320
Dentes	4	6	6	4

*Cmax: Carga máxima **Ffmax: Fuerza de cierre máxima

Las garras chatarreras son indicadas solo para uso con grúas de la línea EPSILON.

Las grúas de las imágenes están equipadas con elementos parcialmente personalizados y no siempre corresponden al equipamiento de serie. Deben considerarse las regulaciones propias de cada país a la hora de configurar las grúas. Los datos relativos a las dimensiones no son vinculantes. Se reservan los derechos a cambios, errores y fallos de traducción

MADAL PALFINGER S/A - Rua Flávio Francisco Bellini, 350, Bairro Salgado Filho, CEP 95098-170
Fone (54) 3026.7000 | Caxias do Sul - RS - Brasil - E-mail: vendas@palfinger.com
SAC - Serviço de Atendimento ao Cliente: 0800 51 2366